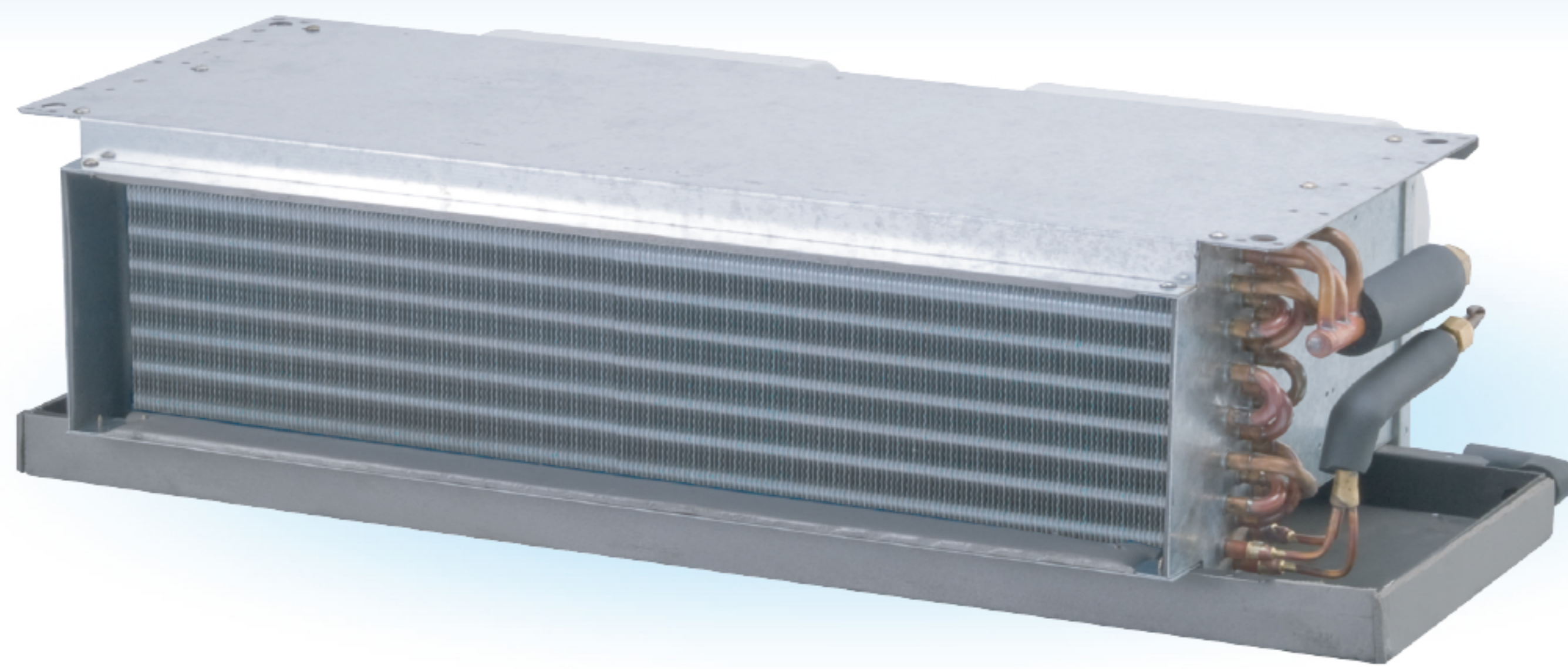


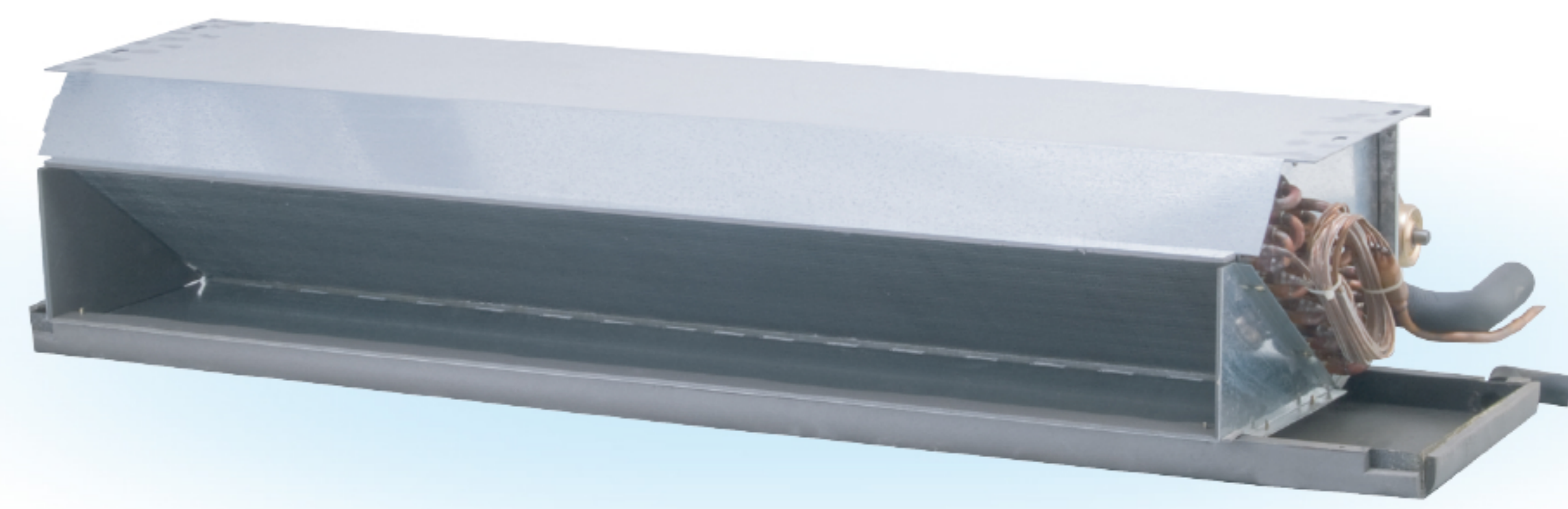


# CONCEALED TYPE FHD-FHDM

Indoor unit

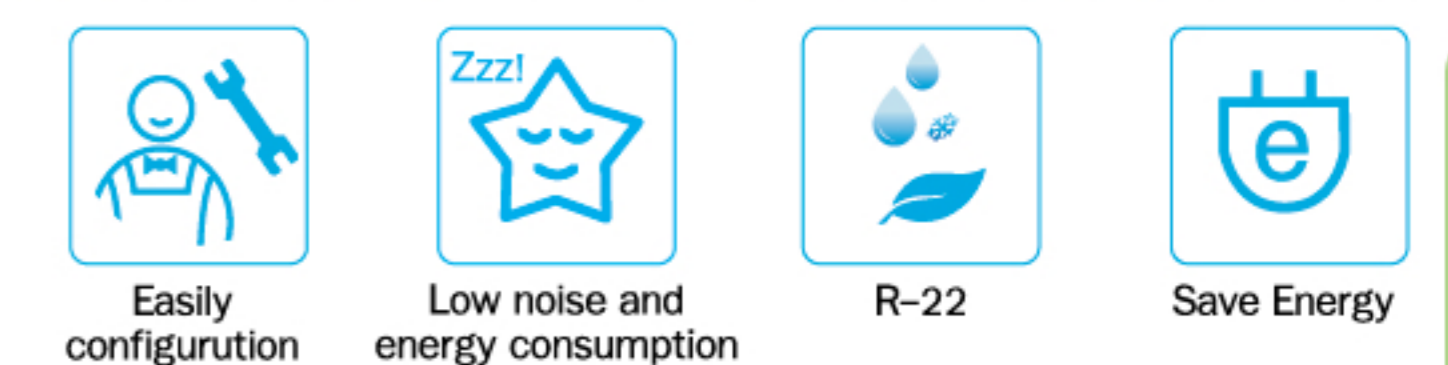


Model FHD

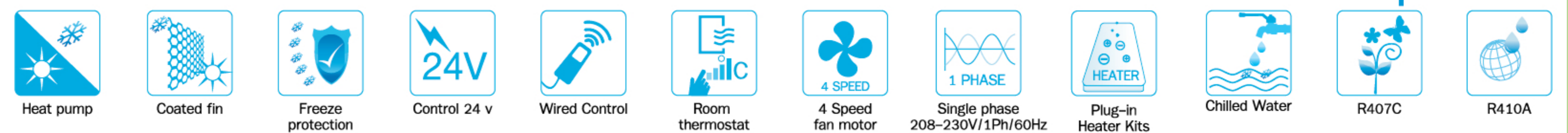


Model FHDM

## Standard Condition



## Options



### FAN COIL UNITS GENERAL DATA "FHD, FHDM"

Model Number		400	600	800	1000	1200	1600	2000		
Performance Data	Nominal cooling capacity	Btu/h	12000	18000	24000	30000	36000	48000	60000	
	Noise level (H / M / L)	dB(A)	34-52	38-52			43-52		54-62	
	Nominal air flow rate	cfm	400	600	800	1000	1200	1600	2000	
Electrical Data	Power supply	V / Ph / Hz	220-240/1/50, 60							
Coil Data	Face area (Model FHD)	m <sup>2</sup>	0.111	0.157	0.227	0.27	0.296		0.358	
	Face area (Model FHDM)		0.18		0.245	0.27	0.309	0.387		
	Number of rows (Model FHD)	n	3					4		
	Number of rows (Model FHDM)		2	3			4			
	Fin type	Type	Corrugated							
	Tube size	in	3/8							
Blower	Type	Centrifugal Double Inlet								
Blower motor	Motor	Type	Permanent Split Capacitor							
	Drive	Type	Direct							
	No. of motors	n	1			2				
Piping Connections	Pipe connection	Type	Flare							
	Liquid line size	in	1/4	3/8			1/2			
	Gas line size	in	1/2	5/8		3/4				
	Drain connection size	in	7/8							
Dimensions	Height (Model FHD) (Box / Unit)	mm	250/240							
	Height (Model FHDM) (Box / Unit)		240/220	250/240						
	Length (Box / Unit) (Model FHD)	mm	805/750	1035/980	1375/1320	1695/1660		2020/1965		
	Length (Box / Unit) (Model FHDM)		940/920		1200/1175	1300/1275	1450/1430	1755/1735		
	Depth (Model FHD) (Box / Unit)	mm	470/435							
Weight Approx.	Net / Shipping (Model FHD)	kg	14/16	18/20	23/26	36/39		38/42	45/69	
	Net / Shipping (Model FHDM)		29/31	30/32	40/44	42/60	60/654	74/79.5	75/81	
Shipping Info	20' container load (Model FHD)	n	297	216	180	135	135	135	108	
	20' container load (Model FHDM)		216	216	180	153	144	126	116	
	40' container load (Model FHD)	n	612	450	369	288		225		
	40' container load (Model FHDM)		450	450	378	324	288	252	236	
	40' HC container load (Model FHD)	n	680	500	410	320		250		
	40' HC container load (Model FHDM)		550	500	420	360	320	280	236	

Specification are subject to change without notice Note : @ Rating Btu/Hr 80°F (26.7°C) D.B., 67°F (19.4°C) W.B. entering air to INDOOR coil 95°F (35°C) ambient air for OUTDOOR unit